

Demographic Pressure in Children's Services

- Changing Demand on Children's Services**

Significant School age population change:

	2008	2009	2010	2011	2012	2013	2014	2008-14 difference	% increase
Total	31984	32688	33589	34942	36360	37743	38954	6970	22

- April – August Pressures 2014**

Children moving into the Borough

Children have continued to move into the Borough at exceptional levels. In the month of July, 289 5-16 year olds moved into Barking and Dagenham, 103 from being educated abroad.

Between April and end of August 2014 we have received 195 referrals from 40 Boroughs because children are moving to the Borough. The highest number of referrals were from the Boroughs below:

- Newham – 35
- Tower Hamlets – 29
- Redbridge – 29
- Waltham Forest – 28

82/195 of the children referred have needs at statutory assessment level.

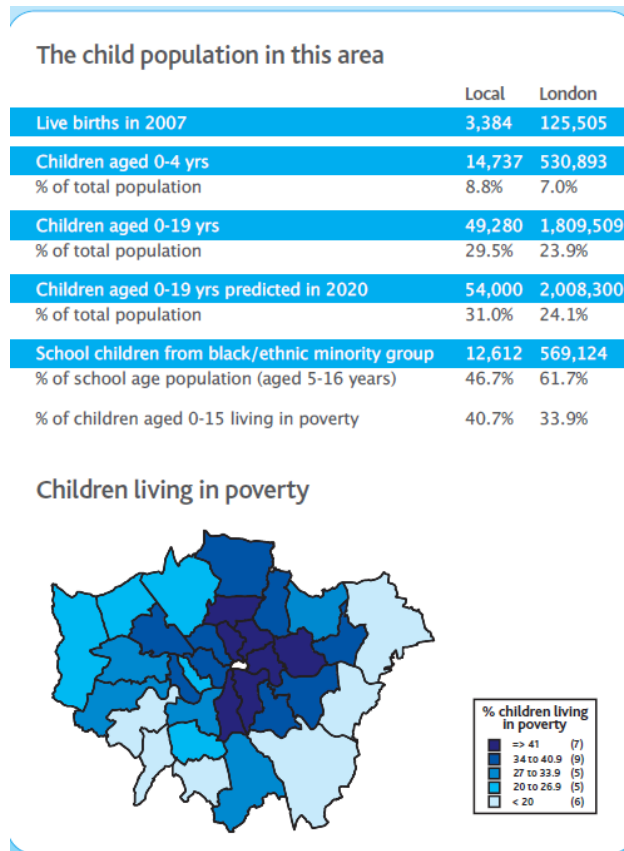
- Children in Social Care**

Summary numbers End of Year 2013/14 compared with figures to 17th September 2014

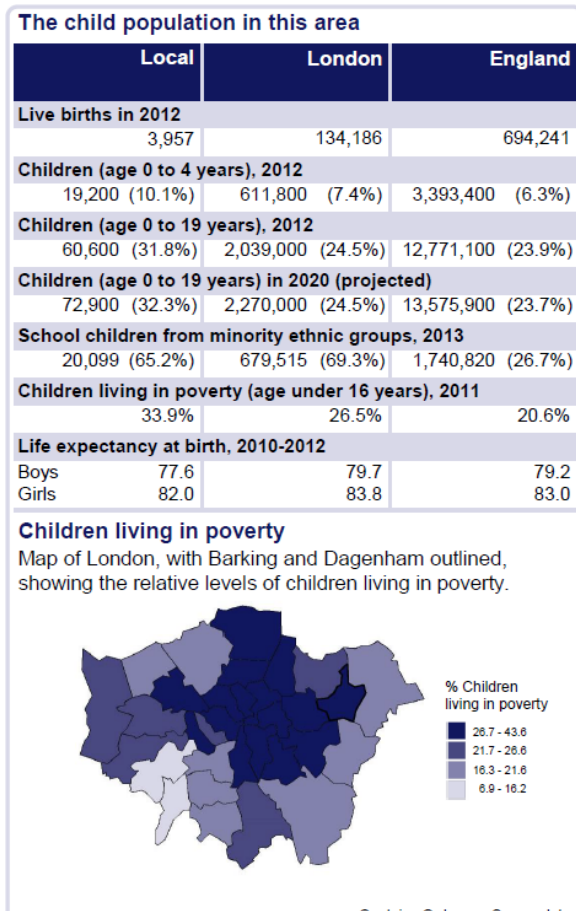
Assessments	13.14 EoY	17/09/14
Completed Assessments	2760	1410
Children In Care	458	424
Child Protection	312	353
Children in Need (Under 18)	1189	1328
Care Leavers (18 plus)	157	158

- Demographic Change:**

Public Health England Data 2010 of 2014



2010



2014

- OFSTED Deprivation Data 2014**

2.6 Income Deprivation Affecting Children Index (IDACI)*

	Score	Rank**
Barking and Dagenham	0.4041	7

*In line with the DfE, this indicator is derived from 2010 deprivation data and 2008 population data

**Rank 1 denotes the most deprived authority